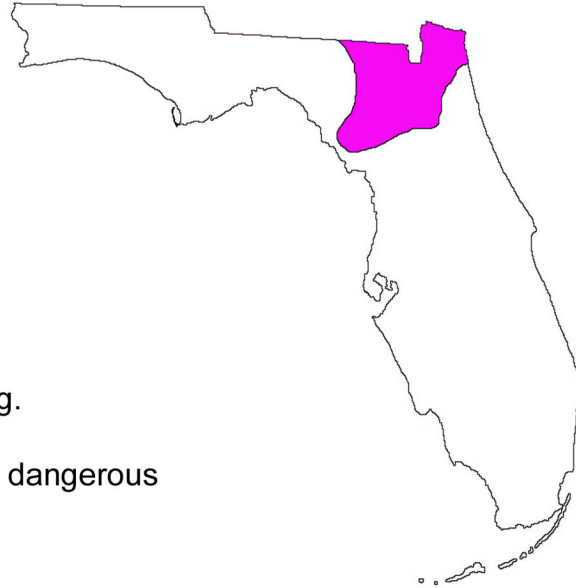


Timber or Canebrake Rattlesnake (*Crotalus horridus*)

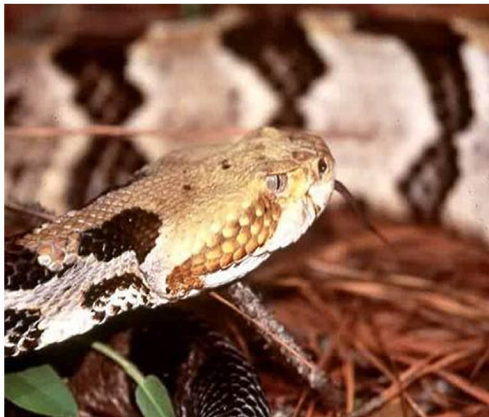
- Average adult length is 3-5 feet, but they can grow to 6 feet.
- In Florida, Timber Rattlesnakes prefer low, fairly damp bottomlands, river beds, hardwood hammocks, pine flatwoods, swamps and cane thickets.
- Mainly feeds on rats, mice, and rabbits but also eats birds, reptiles and amphibians.
- Like all vipers, females give birth to live young.
- Because of its large size, this is a particularly dangerous snake and should be left alone.

Florida Distribution: Part of the Panhandle and north Florida



Appearance

Florida Timber Rattlesnakes have a beige or pinkish-grey body color broken by a series of dark, chevron-shaped, crossbands that run in a series across their bodies. A rust-colored stripe runs along the middle of their backs. The tail of the species is dark brown or black and ends with a large rattle. Timber Rattlesnakes have a large, thick head and there is a darkish band from the eye to the rear of the head. Like the Eastern Diamond-backed Rattlesnake, the scales of this species are strongly keeled, giving these snakes a rough appearance. The young look similar to the adults.



Adult Timber Rattlesnake



Adult Timber Rattlesnake